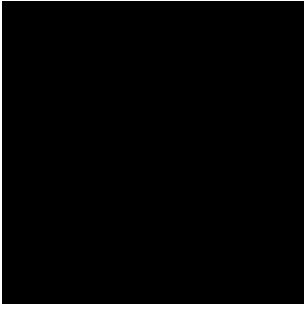
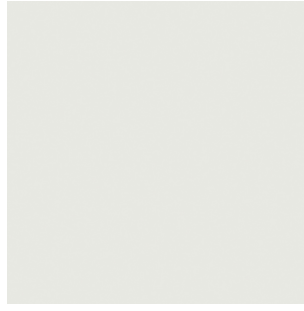


# **LD Seating**

**Colors of plastics**



**RAL 9005**



**RAL 7035**



**RAL 7045**



**RAL 6017**



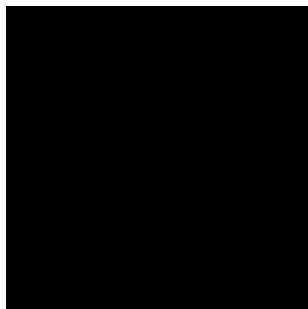
**RAL 5003**



**RAL 3000**

Colors of plastics / Barvy plastů  
Kunststofffarben / Couleurs des plastiques

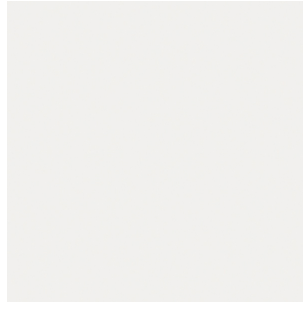
Subject to change  
Změna vyhrazena  
Änderungen vorbehalten  
Sous réserve de modifications



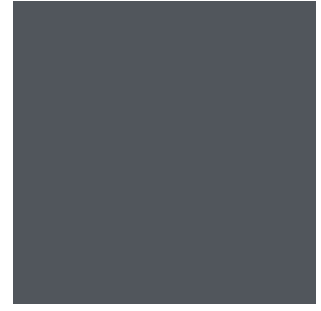
**RAL 9005**



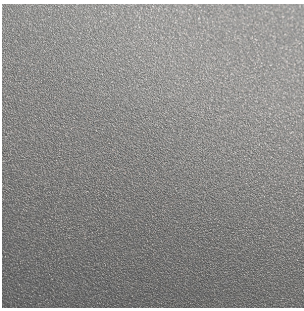
**RAL 9005**



**RAL 9016**



**RAL 7015**



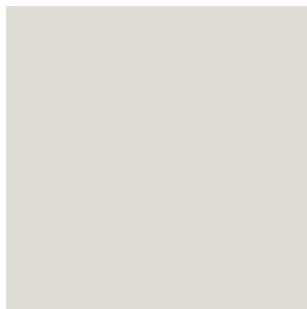
**RAL 7012**  
Metalická barva  
Metallic colour  
Metallic-Farbe  
Couleur métallisée

Colors of plastics / Barvy plastů  
Kunststofffarben / Couleurs des plastiques

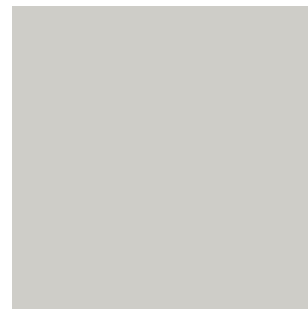
Colors of plastics / Barvy plastů  
Kunststofffarben / Couleurs des plastiques



RAL 9005



RAL 9002

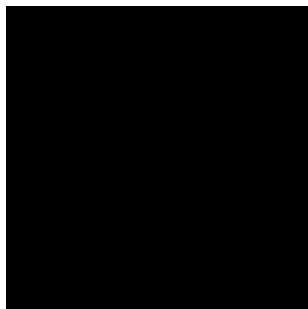


RAL 7035

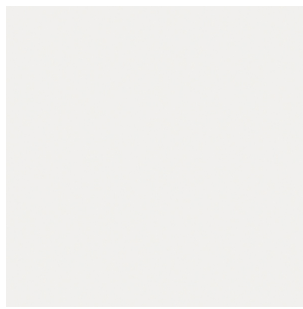
**Funghi**

**LD**  
**Seating**

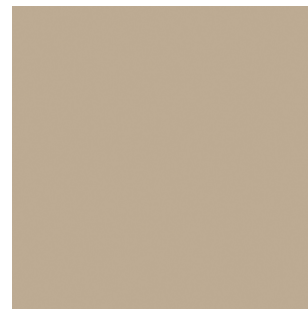
Subject to change  
Změna vyhrazena  
Änderungen vorbehalten  
Sous réserve de modifications



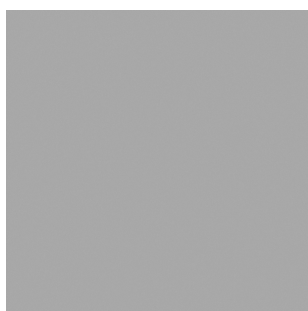
**RAL 9004**



**RAL 9016**



**PANTONE 406C**



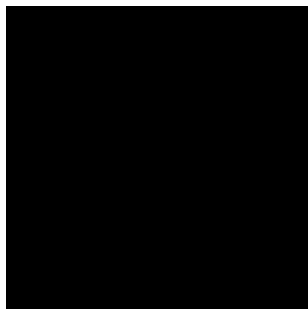
**RAL 7001**



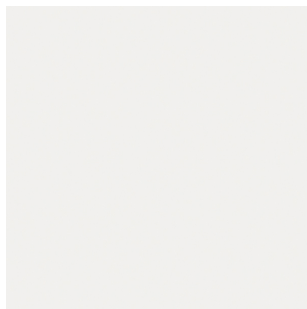
**PANTONE 5425C**

Colors of plastics / Bary plastů  
Kunststofffarben / Couleurs des plastiques

Subject to change  
Změna vyhrazena  
Änderungen vorbehalten  
Sous réserve de modifications



**RAL 9005**

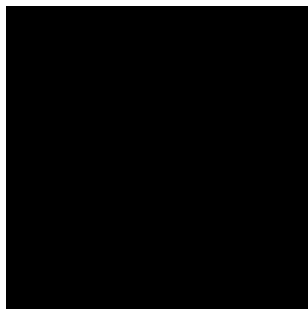


**RAL 9003**

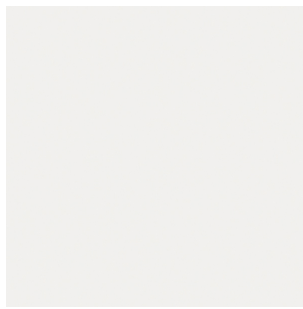


**RAL 7004**

Colors of plastics / Baryv plastů  
Kunststofffarben / Couleurs des plastiques



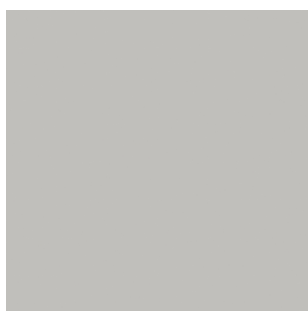
**RAL 9005**



**RAL 9003**



**RAL 5002**



**RAL 7036**



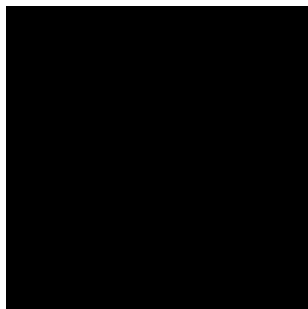
**PANTONE 391C**



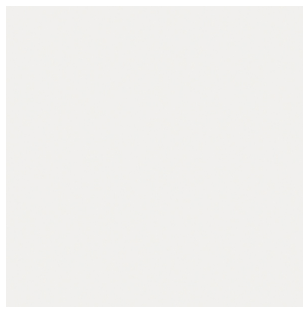
**PANTONE 187C**

Colors of plastics / Baryv plastů  
Kunststofffarben / Couleurs des plastiques

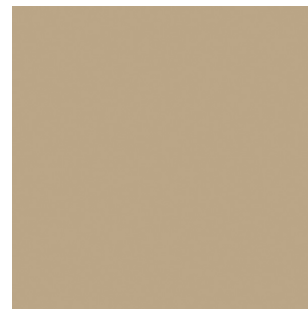




**RAL 9005**



**RAL 9003**



**RAL 1019**



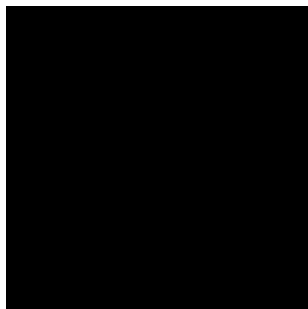
**RAL 7012**



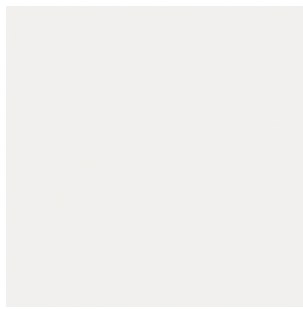
**RAL 3000**

Colors of plastics / Baryv plastů  
Kunststofffarben / Couleurs des plastiques

Subject to change  
Změna vyhrazena  
Änderungen vorbehalten  
Sous réserve de modifications



**RAL 9004**



**RAL 9003**



**RAL 3012**



**RAL 1019**



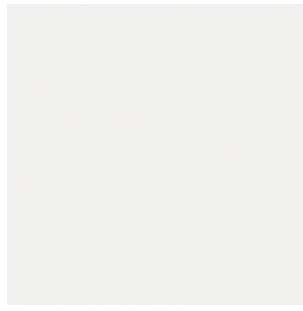
**RAL 5018**

Colors of plastics / Barvy plastů  
Kunststofffarben / Couleurs des plastiques

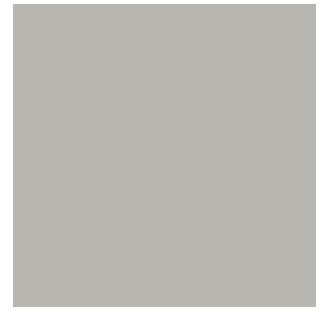
Subject to change  
Změna vyhrazena  
Änderungen vorbehalten  
Sous réserve de modifications



**RAL 9005**



**RAL 9016**



**RAL 7038**

## **Colors of plastics**

The colours depicted are for guidance only – the displayed colour will depend on your monitor. To determine the exact shade, it is necessary to compare the numbers with the RAL / Pantone colour chart.

## **Barvy plastů**

Uvedené odstíny jsou pouze orientační – mohou podléhat zkreslení monitoru. Pro přesné zjištění odstínu je nutné porovnat uvedená čísla se vzorníkem barev RAL / Pantone.

## **Kunststofffarben**

Die dargestellten Farben stellen lediglich eine Orientierungshilfe dar – Die angezeigten Farben sind abhängig von Ihren Monitoreinstellungen. Für die Bestimmung der exakten Farben gleichen Sie bitte die Farbbezeichnungen der Kunststoffe mit RAL- bzw. Pantone-Musterkarten ab.

## **Couleurs des plastiques**

Ces teintes ne sont qu'à titre indicatif - elles peuvent être sujettes à une distorsion du moniteur. Pour déterminer la teinte exacte, il est nécessaire de comparer les numéros mentionnés avec le carnet d'échantillons des couleurs RAL / Pantone.

